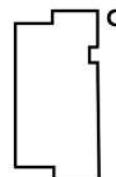
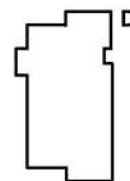
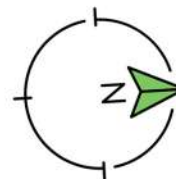
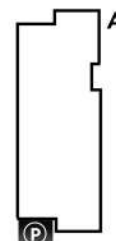
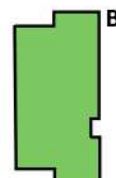


S



P



nr pom.	pomieszczenie	m <sup>2</sup>
62.1	przedpokój	7.33
62.2	łazienka	4.3
62.3	sypialnia	11.57
62.4	pokój dzienny + aneks kuchenny	20.50
suma:		43.70
	loggia	10.15

Piętro 4, Segment B  
**Mieszkanie nr 62**  
43,70 m<sup>2</sup>

**Piętro 4.**

